



## Did you know?

There are no special screening guidelines for women with dense breasts.

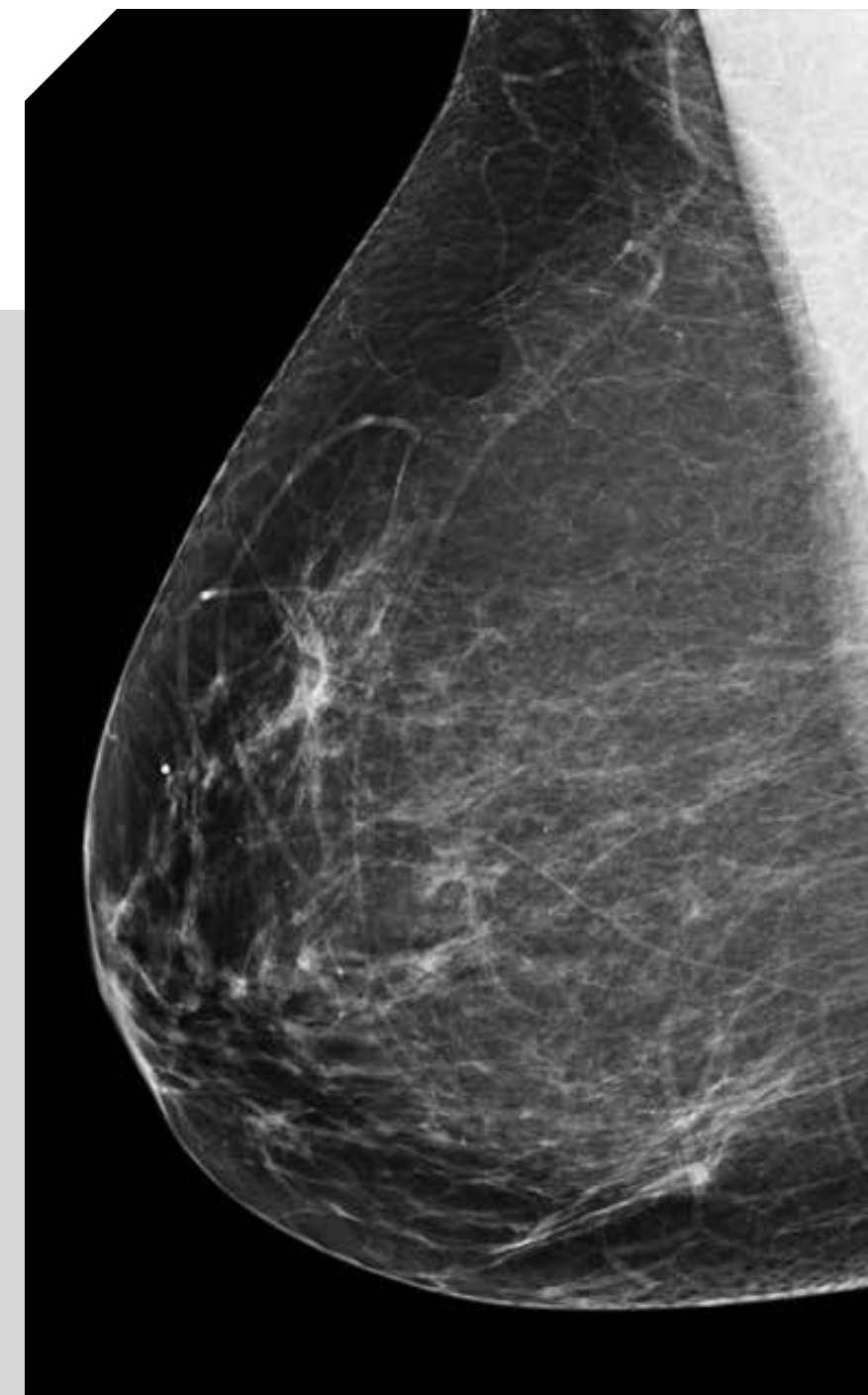
Talk with your doctor about what screening tests are right for you.

For more information, visit our website or call Susan G. Komen's Breast Care Helpline.

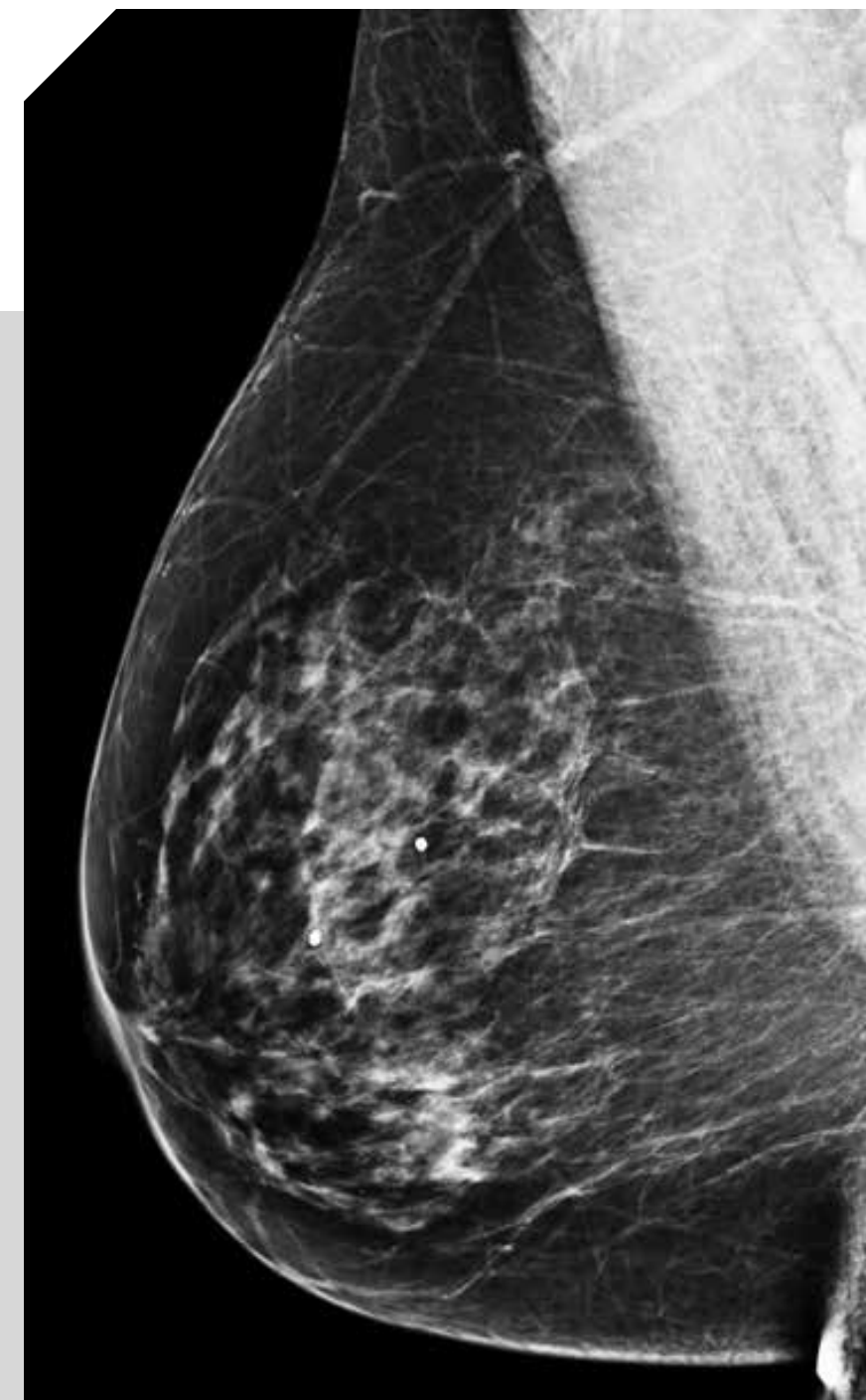
[komen.org](https://www.komen.org)  
**1-877 GO KOMEN**  
(1-877-465-6636)

**BREAST DENSITY** describes how your breasts look on a mammogram. It compares the area of breast tissue to fat. It's not a measure of how the breasts feel.

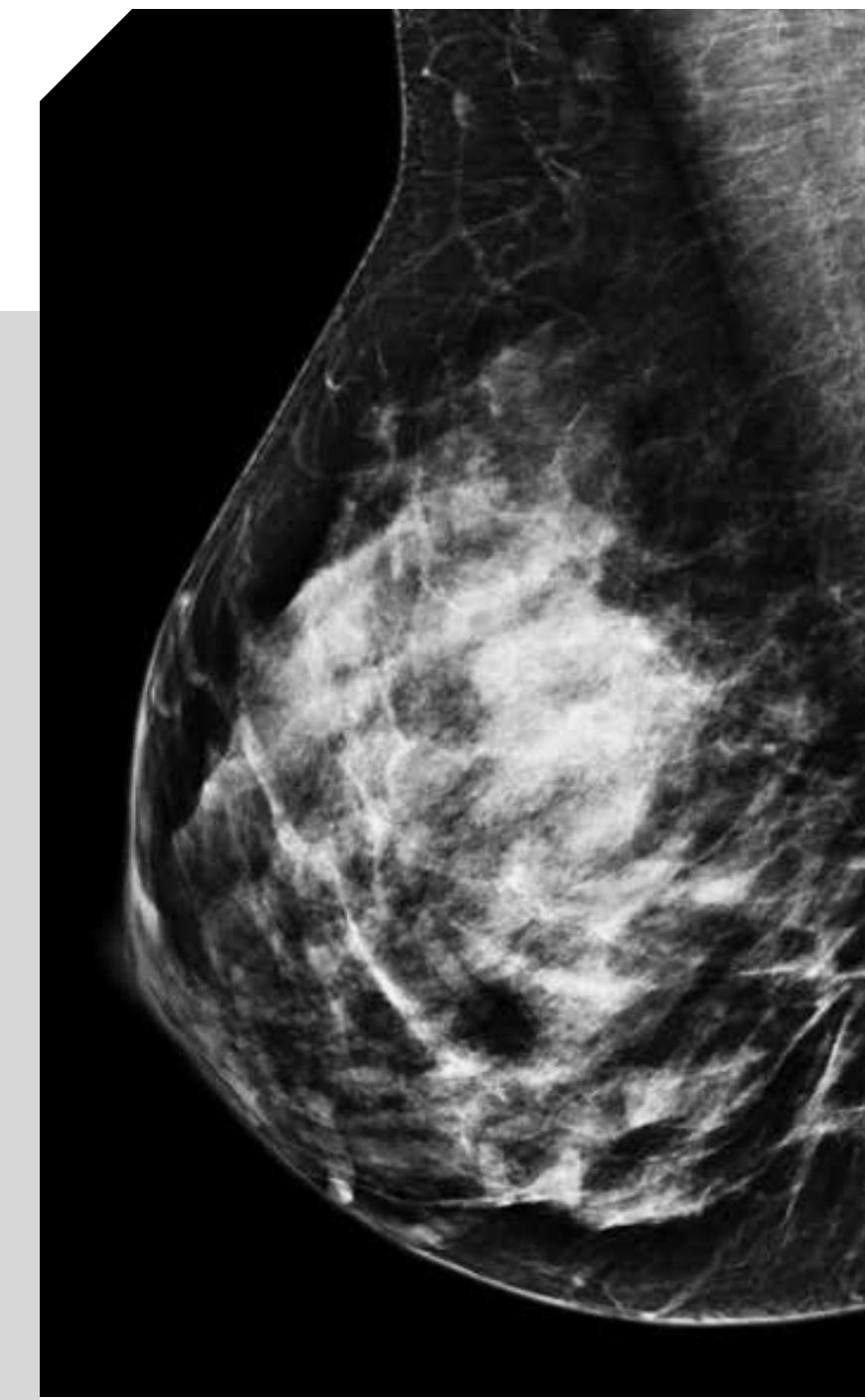
Dense breasts can look white or light gray on a mammogram. Cancer also looks white or gray, so it can be hard to tell the difference.



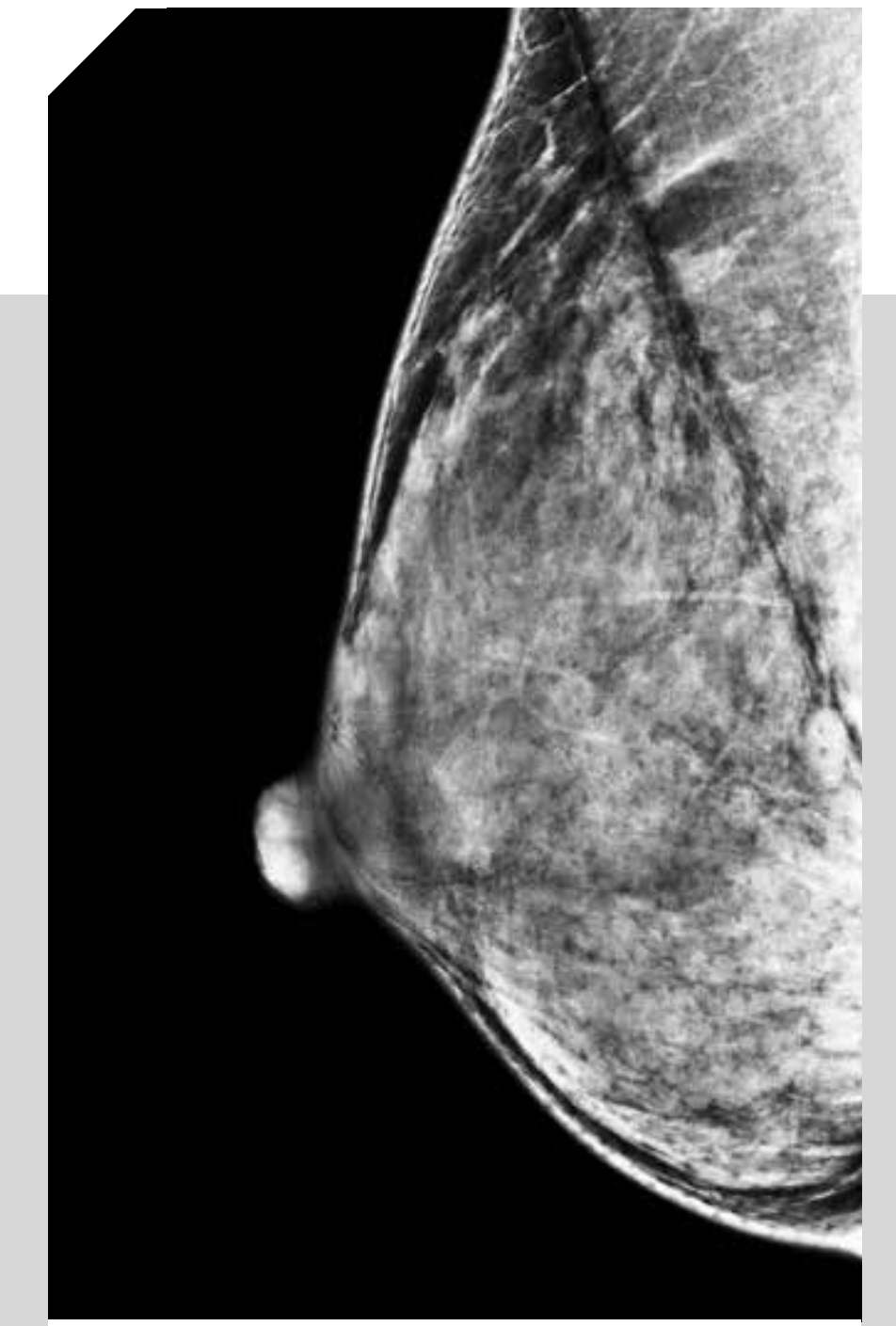
Fatty breast



Some breast density



More breast density



Dense breast